



ATLEON (N) 56.15

N Edition, July 06

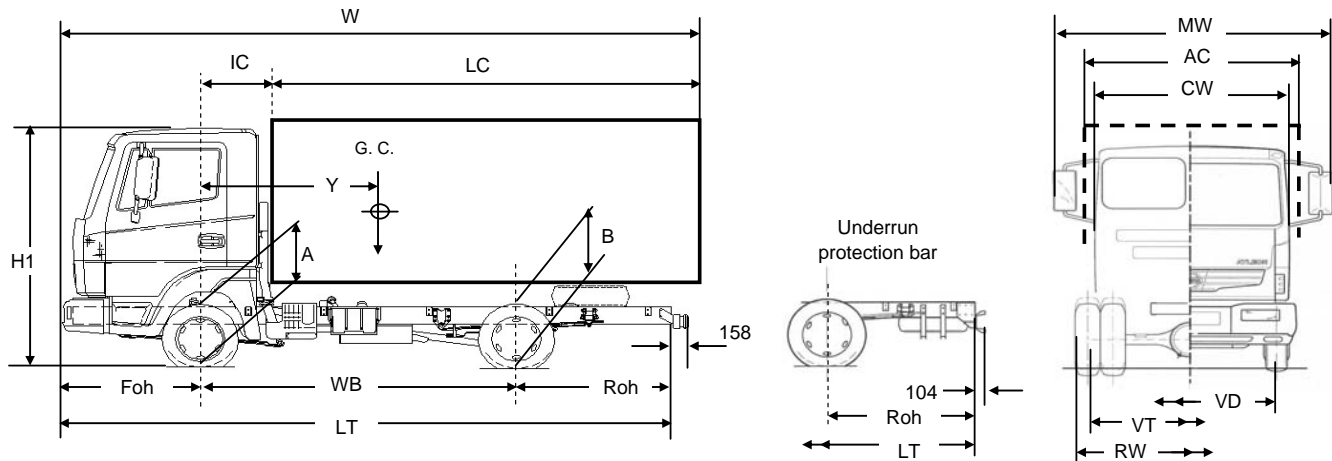
GVW: 5.600 Kg.

GCW: 9.100 Kg.

150 HP

Specification Sheet:

TK-N56.15



BODY INSTALL DRAWING	93002	93002	93002	93002		
	LA21C	LA21D	LA21E	LA22A		

DIMENSIONS (mm)

WB	Wheelbase	2.800	3.200	3.600	4.000			
Foh	Front Overhang	1.220						
Roh	Rear Overhang	1.370	1.680	1.980	2.280			
LT	Overall length (1)	5.390	6.100	6.800	7.500			
R1	Turning Radius	Curb to curb	5.460	6.120	6.790	7.450		
R2		Wall to wall	6.060	6.730	7.390	8.050		
CW	Cabin width	w/o mirrors 1.918						
MW	Overall width	Long arm mirrors	2.647					
		Short arm mirrors	2.450					
RW	Rear axle width	2.025						
VD	Front Track	1.700						
VT	Rear Track	1.583						
H1	Height (unladen)	2.405						
A	Frame height on front axle	Unladen	648					
		Laden	607					
B	Frame height on rear axle	Unladen	740					
		Laden	651					

IC	Front axle to Rear Body	680						
Y	Gravity center (2)	Minimum	2.431	2.776	3.121	3.464		
		Maximum	2.650	2.980	3.310	3.640		
LC	Body Length (2)	Minimum	3.501	4.191	4.881	5.567		
		Maximum	3.940	4.600	5.260	5.920		
W	Maximum overall Length	5.840	6.500	7.160	7.820			
AC	Maximum Body Width	Long arm mirrors	2.450					
		Short arm mirrors	2.300					

(1) Without Underrun protection bar or tail lights.

(2) Maximum and minimum lengths are given as a guide. This criteria is applicable to standard bodies, with uniformly distributed loads, without cranes, rear tail lifts or any other equipment producing an additional load.

For bodies not observing that criteria, consult the Bodybuilder Standards.

Bodybuilders are responsible of ensuring that all legal requirements are met.

WEIGHTS (Kg.)

WB	Wheelbase	2.800	3.200	3.600	4.000			
GVW	Gross Vehicle Weight	Total	5.600					
		Front axle	2.120					
		Rear axle	4.000					
GCW	Gross Combined Weight	9.100						
Vehicle kerb weight in running order (*)		Total	2.050	2.070	2.085	2.110		
		Front axle	1.460	1.460	1.460	1.460		
		Rear axle	590	610	625	650		
Payload		3.550	3.530	3.515	3.490			

(*) Vehicle curb weight is referred to a vehicle with standard equipment, without driver, full fuel tank, spare wheel and tool kit.

See table of Option weights on page 2 / 2. Homologated weights may change in different countries.



ATLEON (N) 56.15

N Edition, July 06

GVW: 5.600 Kg.

GCW: 9.100 Kg.

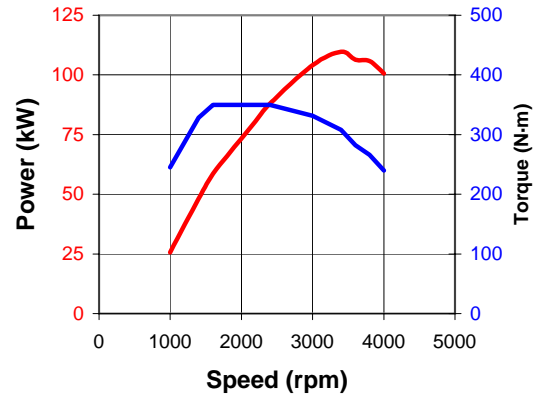
150 HP

Specification Sheet:

TK-N56.15

ENGINE ZD30 Kai (Hi)

N° of cylinders, configuration: 4, in line
 Valves per cylinder: 4, DOHC
 Air intake system: Turbo intercooler
 Control system: ECCS
 Engine performance (according to EC 80/1269 directive)
 Displacement: 2.953 cm³
 Bore x Stroke: 96 mm x 102 mm
 Max. Power (EC): 110 kW (150 HP) at 3.400 rpm
 Max. Torque (EC): 350 Nm (35,7 Kgm) at 1.600 rpm
 Emission class: EURO4 (70/220/EEC amended by 2003/76/EC)
 Limited speed to 90 Km/h (2002/85/EC) (**)
 Compression ratio: 16,9:1
 Fuel type: Diesel
 Fuel supply: Direct injection + Common Rail
 Emission control system EGR + Catalyst



GEAR BOX 6S380

6 speed synchromesh and 1 reverse

1^a 5,38:1 2^a 3,15:1 3^a 2,04:1 4^a 1,36:1 5^a 1,00:1 6^a 0,79:1 MA 4,83:1

CLUTCH D275 (275)

Dry, single plate
 Diameter 275 mm
 Hydraulic control

WHEELS & TYRES

Front: Single Rear: Double
 Wheel: 5,5x16" [6xM18]
 Tyres: 205/75R16

Options:

Wheel covers (front axle)

DIFFERENTIAL H290B

Single reduction of hypoid type
 Low ratio: 4,625:1

BRAKING SYSTEM (HYD)

Dual hydraulic circuit
 Vacuum servo assistance
 Anti-lock Braking System (ABS) & Electronic Brake Device (EBD)

Front brake

Self-ventilated disc. Diameter ef.: 234,6 mm.

Rear Brake

Self-ventilated disc. Diameter ef.: 241 mm.

Service Brake

Hydraulic dual circuit

Emergency Brake

Operated through any of the service circuits

Parking Brake

Mechanical type, on rear axle independent drums

STEERING

Recirculating ball, power assisted
 Steering wheel DIA: 470mm
 Adjustable steering column

FRAME LP2

"C" section steel longitudinal side members

Riveted cross members

Section: 168x60x4 mm

Frame width: 800 mm

Options

Rear underrun protection

Trailer crossbar D= 21kN

Frame equipment:

Body supports

Wheelchock (DIN G46)

Spare wheel hanger

FRONT SUSPENSION (2.12T)

Rigid axle, double T section
 Parabolic leaf springs
 Shock absorbers
 Stabilizer bar DIA:28mm

FUEL SYSTEM (90)

Fuel tank: 90 L. Plastic material
 Right hand side
 Fuel filler cap with key

REAR SUSPENSION (4.0T)

Rigid axle
 Parabolic leaf springs
 Shock absorbers
 Stabilizer bar DIA:25mm

ELECTRICAL SYSTEM (135)

Tension: 12 V.
 Starter: 2,5 Kw
 Alternator: 135 A
 Battery: 1 x 110 Ah.

Options

Battery high capacity (1 x 120 Ah)

REMARKS:

These specifications are not referred to any particular country.

All data included in these Specification Sheets may be modified due to changes or product improvements.

Performances

	Tyres	Std	Opt.
Max speed (0% grade) Km/h (**)		90 (124)	
rpm at 90 Km/h		2.534	
Max. ascending grade (%)		46	
Max. starting ascending grade (%)		37	

CAB TK-20 (N2)

Advanced cab, two person (three persons as option)

Mechanical tilt (41°)

Adjustable driver seat in inclination and advance

Individual assistant seat+console box with lid

Short arm outside mirrors

Wide angle and side under mirror (assist side).

Pre-installation Audio+2 speakers+roof antenna

Power window

Door lock key cyl

Anti theft immobilizer

Side turn lamps (extensible type)

Seat belts & Adjustable headrest height (outside seats)

Instrumentation:

Speedometer (Km/h)

Tachometer

Odometer and trip Odometer

Engine coolant temperature gauge

Fuel level gauge

Digital clock

Digital Tachograph (VDO-SIEMENS) two drivers

Options:

Double assistant seat with console tray

Long arm outer mirrors (Max body width)

Heated outer mirrors

Day time running light

Air conditioning

Radio AM/FM + CD

Comfort Equipment (SE grade):

Driver seat with suspension

12V auxiliary power socket

Auto-door lock

Outer mirrors with electrical adjustment

Two additional speakers (tweeters)

Head lamp with aiming device

Front fog lamps

Key less entry

Spoiler on front bumper

OPTIONS WEIGHT INCREASE (Kg.)	FR	RR	TOTAL
Trailer crossbar	-12	35	23
Frame equipment	-4	24	20
Comfort equipment	20	0	20
Air conditioner	20	0	20
Rear underrun protection	-5	15	10