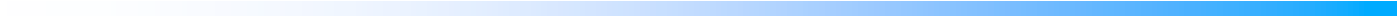
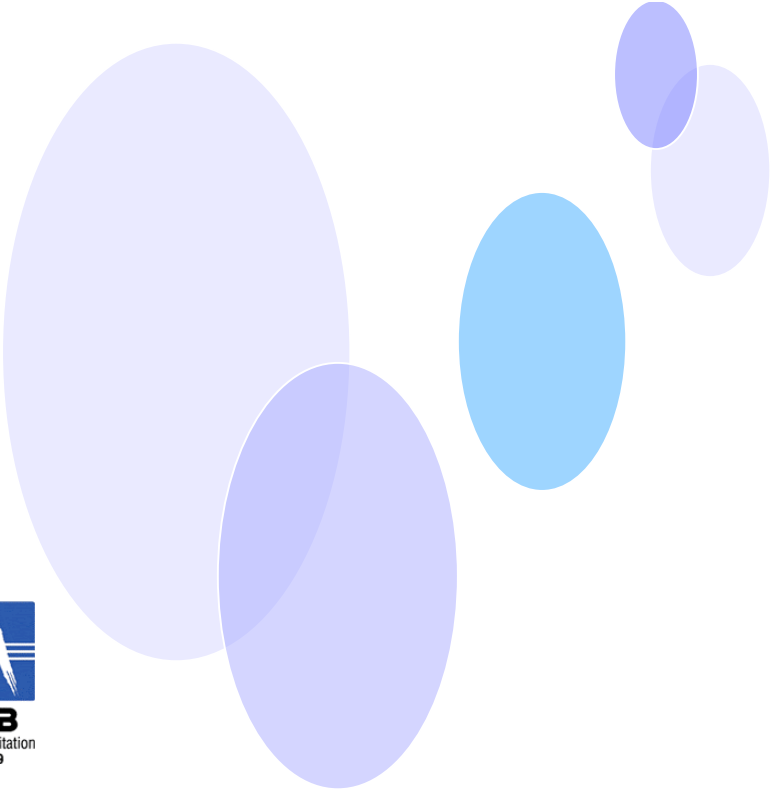




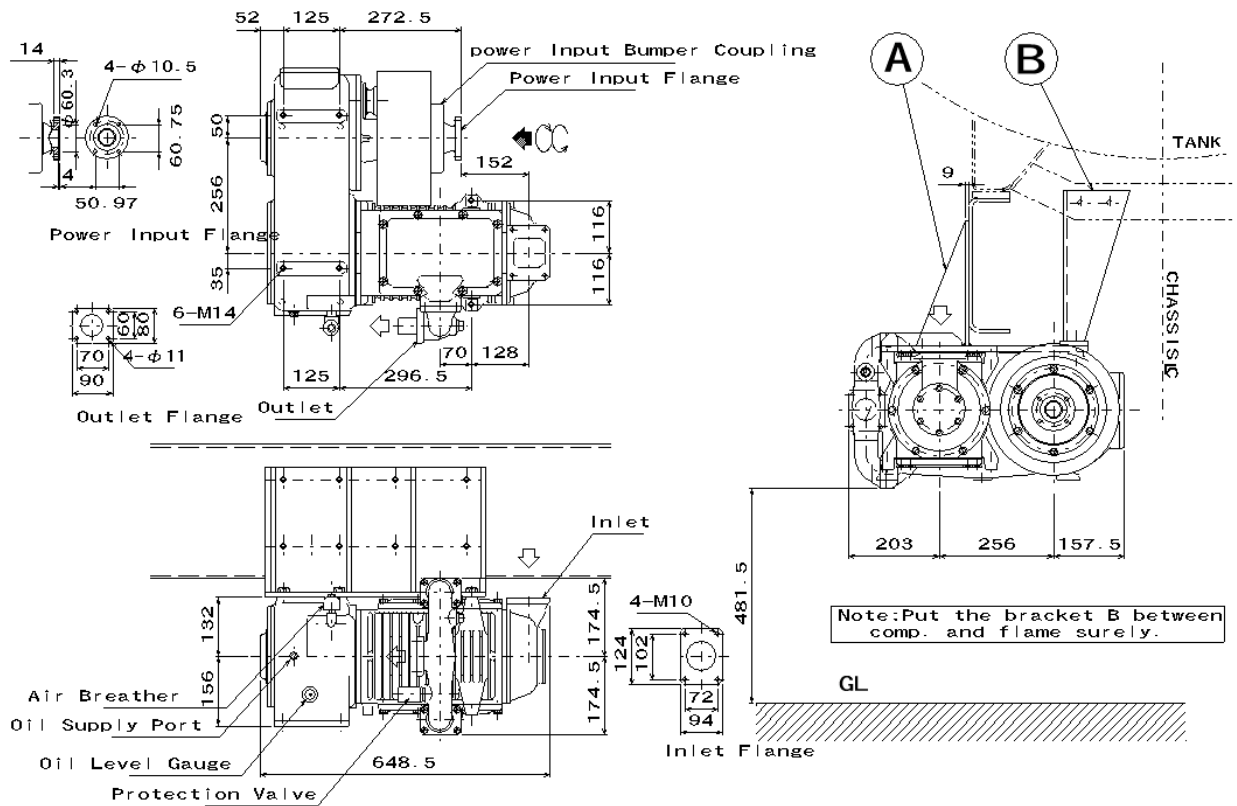
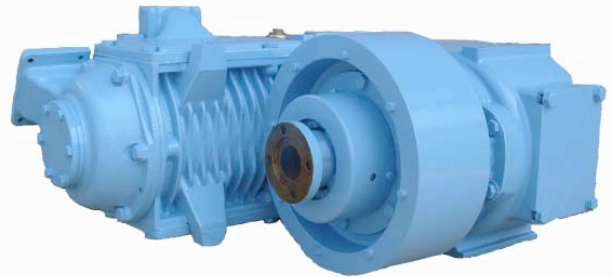
**HORI ENGINEERING CO.,LTD.**

# **OilFree Wing Compressor for Pneumatic Bulk Trailer**



# WING 602RF

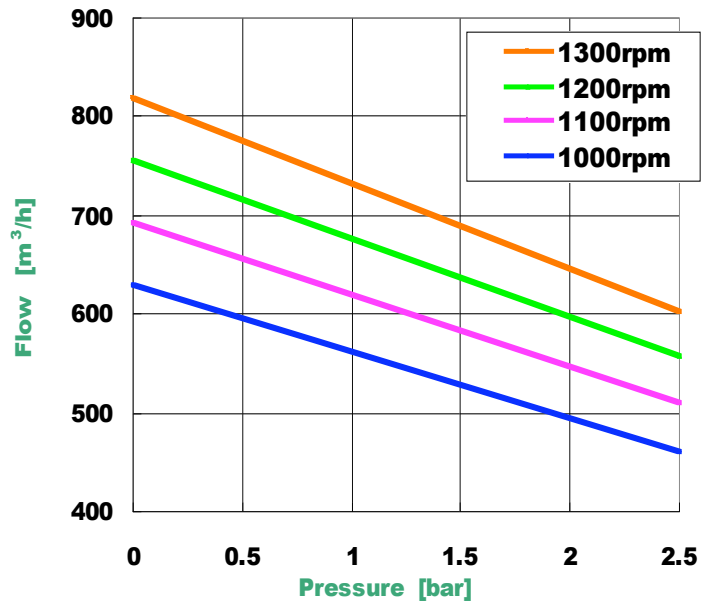
## WING 602RF-C



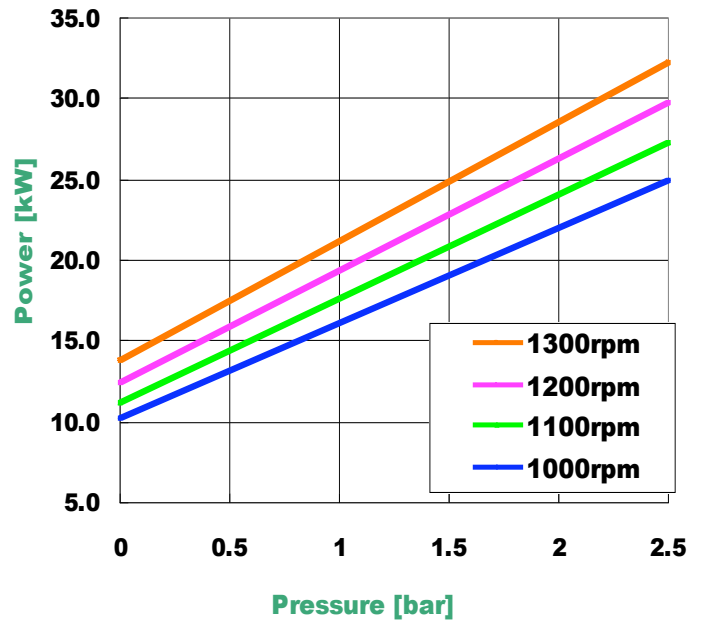


## WING 602

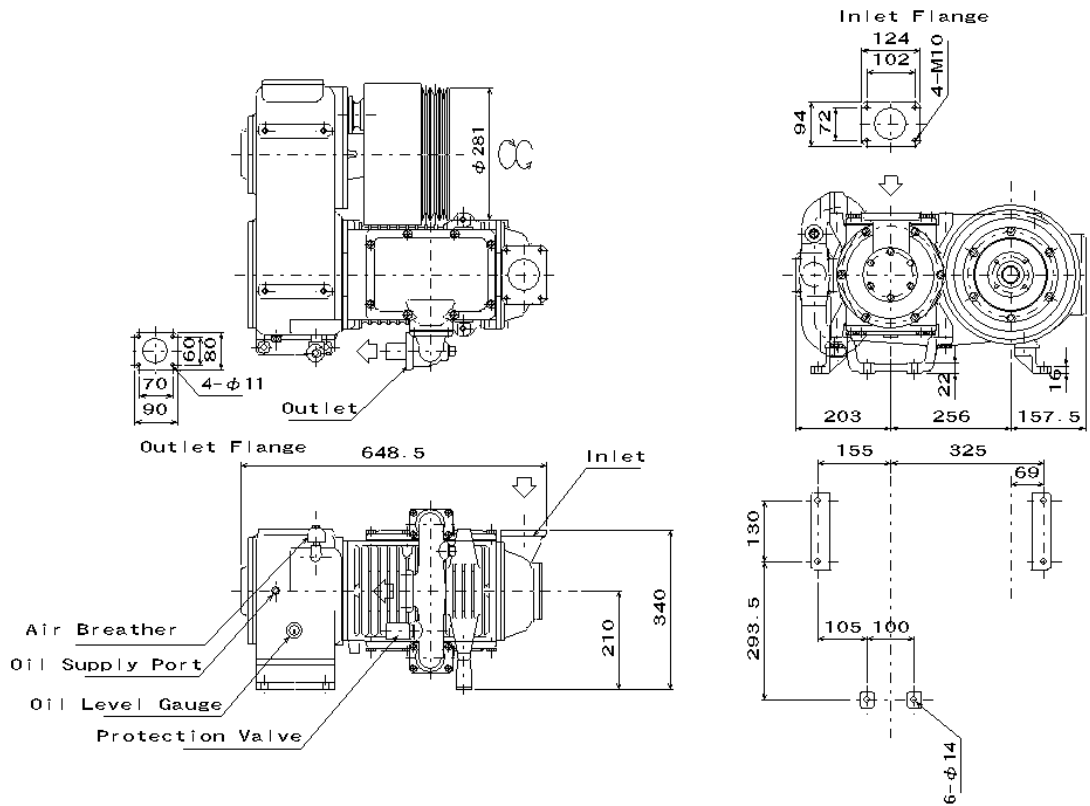
WING 602  
Perfomanc Curve



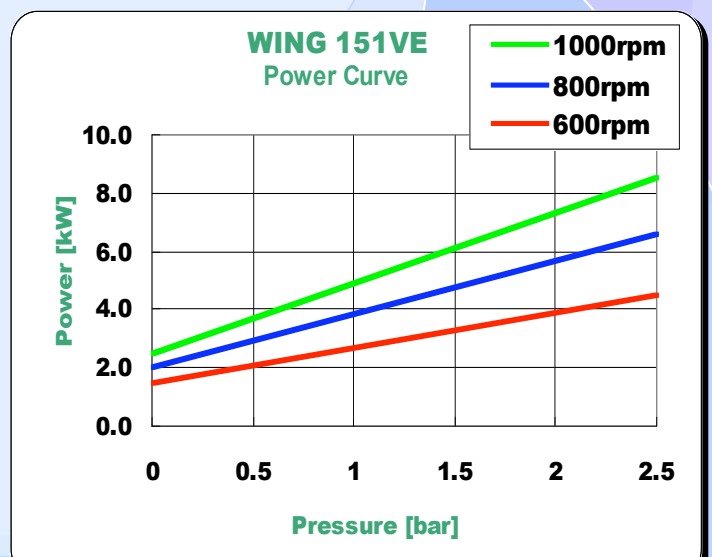
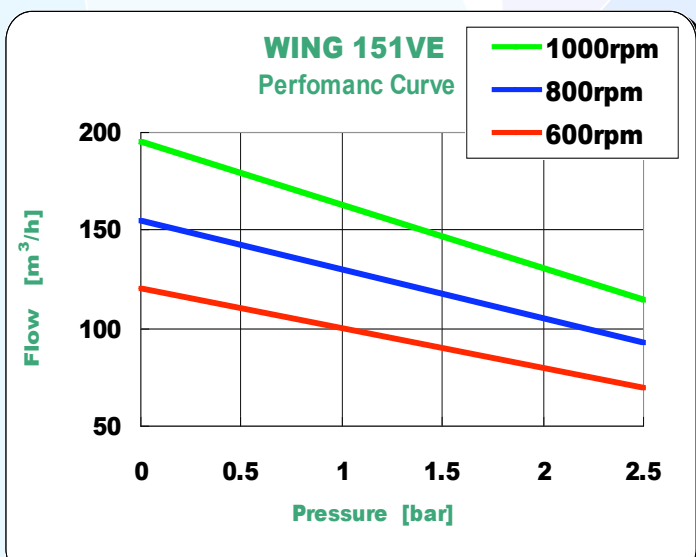
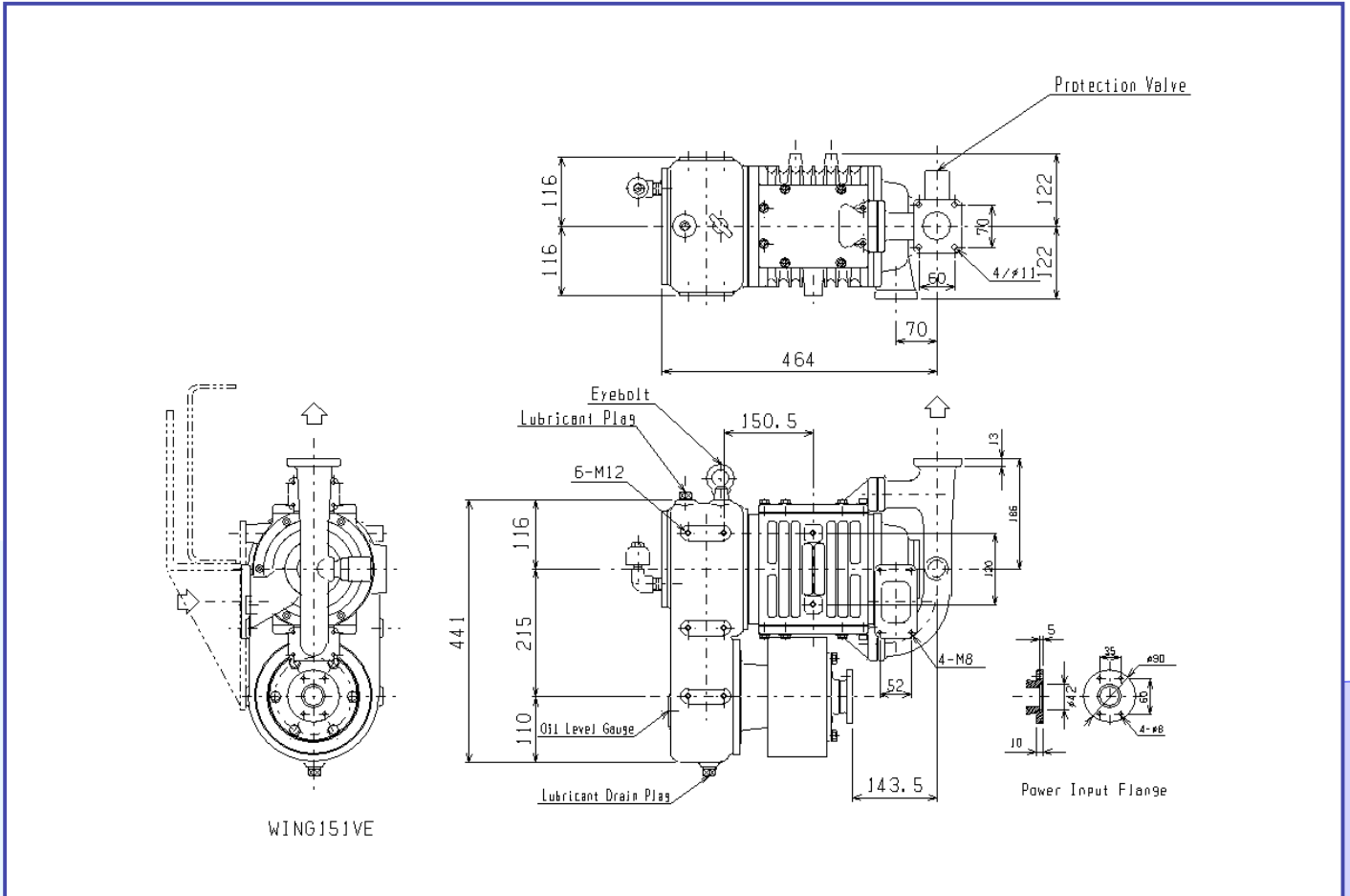
WING 602  
Power Curve



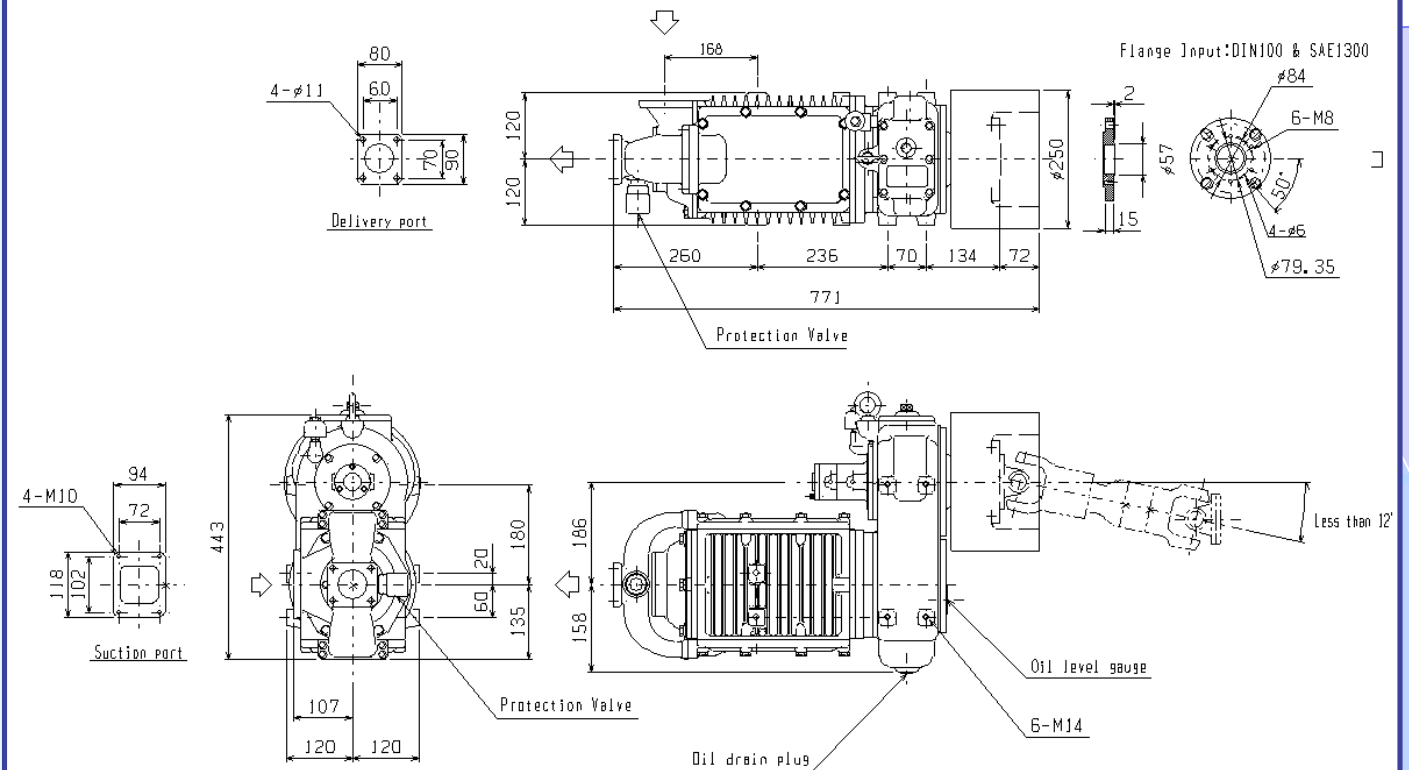
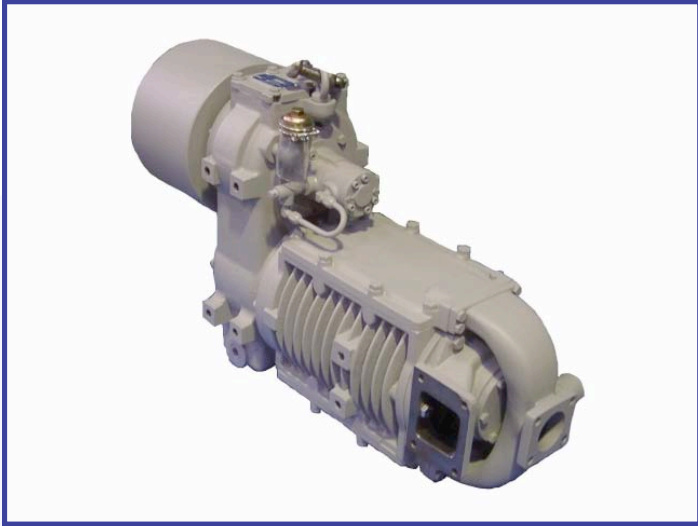
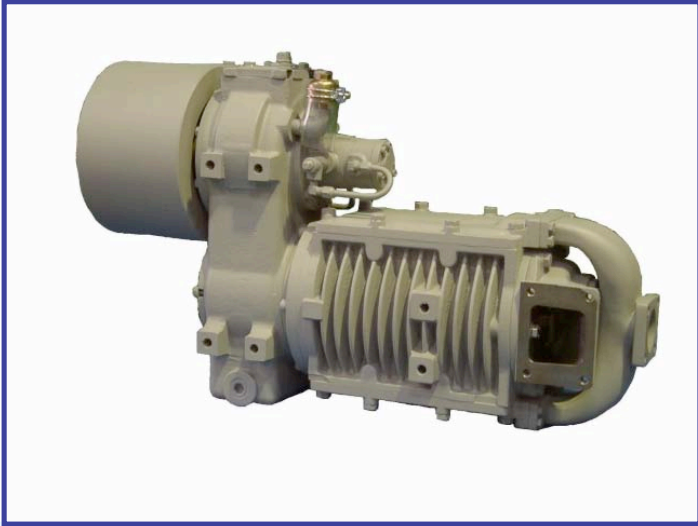
# WING 602RF-BDSL



# WING 151VE



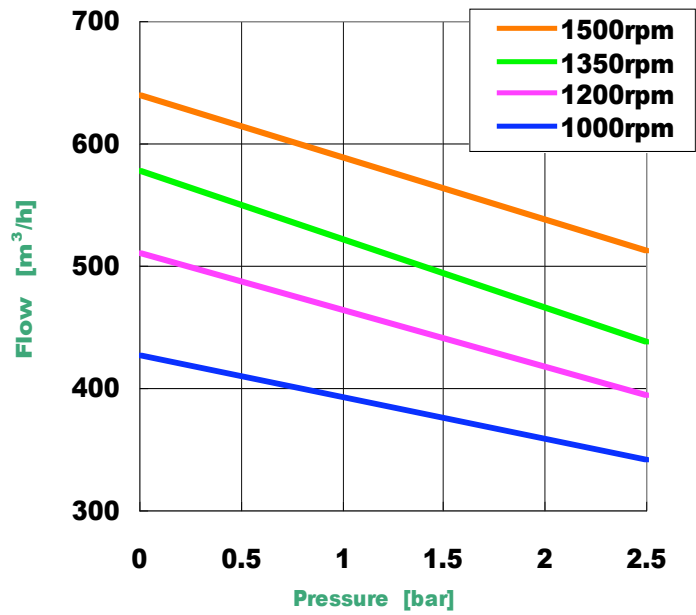
# HEW2A



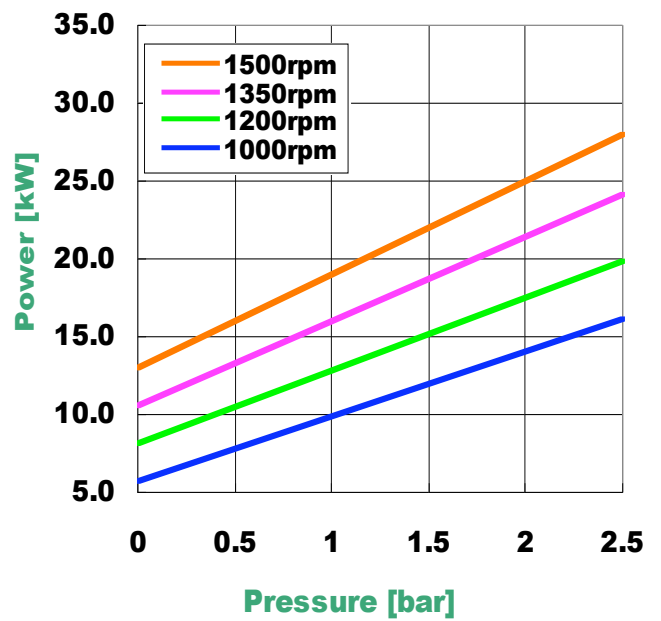
# HEW2A



**HEW2A**  
Perfomanc Curve



**HEW2A**  
Power Curve



# Company profile

Since its establishment in 1962, Hori Engineering Co., Ltd. has designed and manufactured compressors, blowers, and vacuum pumps with higher efficiency, lighter weight, and lower price on the basis of its unique technology, and has acquired a high share in the vehicle-loaded compressor and gas compressor markets.

With its characteristic engineering and technical capabilities, Hori Engineering Co., Ltd. will continue to challenge the future for providing greater achievements.



Name of company	Hori, Engineering Co., Ltd.
President	Kohei Hori (Founder, Bs-Eng)
Established	July, 1962
Capital	¥ 50,000,000 -
Employees	50



## HORI ENGINEERING CO., LTD.

2285 KUZUHARA FUJISAWA  
KANAGAWA JAPAN 252-0822

TEL : +81- 466- 47- 1000

FAX : +81- 466- 47- 1075

E-mail : [m\\_nakamaru@horieng.co.jp](mailto:m_nakamaru@horieng.co.jp)

URL : [http : //www.horieng.co.jp](http://www.horieng.co.jp)

Nov.2008